

430HK2/420HK2

430HK2/420HK2

The Panasonic Advantage



Higher Module Efficiency

Superior module efficiency of 22.2% and 21.7%, respectively, allows maximum power production with less roof space. Offering clean aesthetics and one of the industry's lowest annual degradation rates, power output of at least 92% is guaranteed after 25 years.



EVERVOLT AllGuard, AllGuard and TripleGuard 25-Year Warranty

A long-term warranty is only as reliable as the company behind it. EVERVOLT AllGuard, AllGuard and TripleGuard 25-year warranties cover EVERVOLT® panels for performance, product, parts and labor<sup>1</sup> for 25 years. Whether in year three or year 25, your Panasonic warranty will be there when you need it.



High Efficiency in High Temperatures

Produce more energy throughout the day even on the hottest days in the warmest climates. EVERVOLT® solar panels outperform others when temperatures rise due to our industry-leading 0.24%/°C temperature coefficient.



Heterojunction Cell Technology with Gapless Connections

Half-cut cells with heterojunction technology with gapcell connections minimizes electron loss, maximizes conversion efficiency, and produces considerably higher power output over conventional panels.



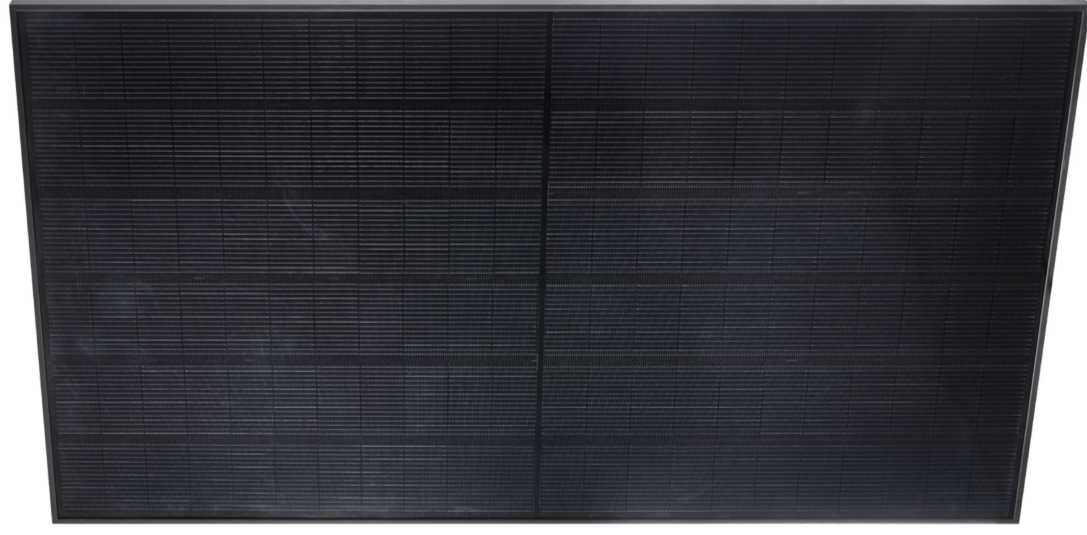
Durability & Quality Assurance

N-type cells result in minimal Low Induced degradation (LID) and Potential Induced degradation (PID), which supports reliability and longevity. As a solar pioneer for over 40 years, Panasonic EVERVOLT solar panels are backed by innovation, experience and a brand you can trust.



Improved Performance When Shaded

Continuous power production in shaded areas for greater energy yields and output. More sunlight absorption means more clean power to your home.



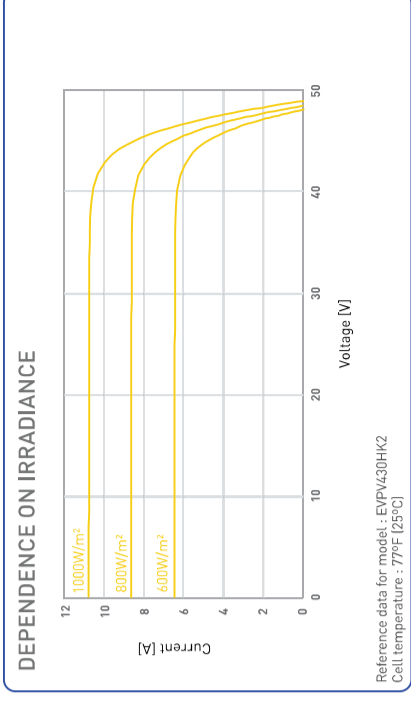
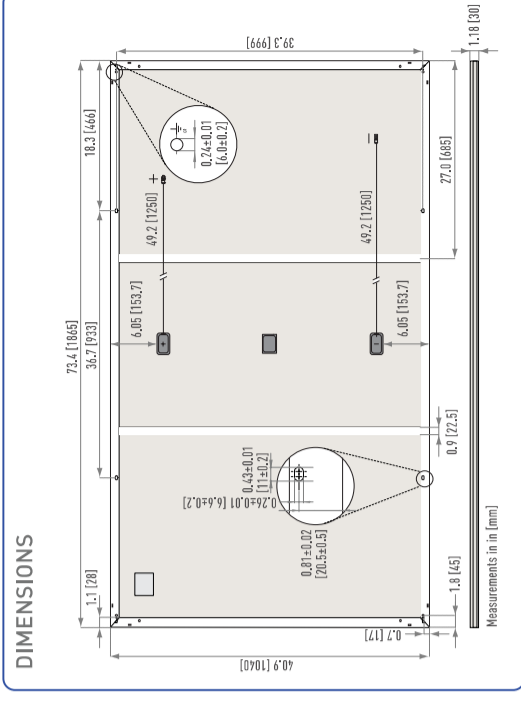
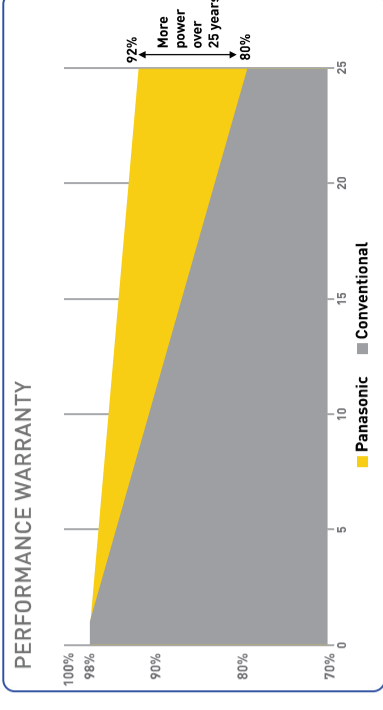
ELECTRICAL SPECIFICATIONS	
Model	EVPV430HK2
Rated Power (Pmax) <sup>1</sup>	430W
Maximum Power Voltage (Vpm)	42.8V
Maximum Power Current (Ipm)	10.05A
Open Circuit Voltage (Voc)	49.3V
Short Circuit Current (Isc)	10.81A
Temperature Coefficient (Pmax)	-0.24%/°C
Temperature Coefficient (Voc)	-0.24%/°C
Temperature Coefficient (Isc)	0.04%/°C
NOCT	44°C (±2°C)
CEC PTC Rating	413.1W
Module Efficiency	22.2%
Power Density	20.6 W/ft <sup>2</sup>
Maximum System Voltage	1000V
Maximum Series Fuse	25 A
Watt Class Sorting	-0/+10W

MECHANICAL SPECIFICATIONS	
Connector Type	Stäubli MC4 PV-KBT4/KST4 (4 mm <sup>2</sup> )
Cable Size / Type	12AWG(4mm <sup>2</sup> ) PV Wire, 49.2±49.2 in
Max Snow Load (+) <sup>2</sup>	146 psf (7000 Pa) <sup>+</sup>
Max Wind Load (-) <sup>2</sup>	83.5 psf (4000 Pa) <sup>+</sup>
Dimensions LxWxH	73.4 x 40.9 x 1.2 in (1865 x 1040 x 30 mm)
Weight	47.6 lbs (21.6kg)
Pallet Dimensions LxWxH	75.2 x 42.9 x 47.5 [1910 x 1090 x 1205 mm]
Quantity per Pallet / Pallet Weight	33pcs/1660 lbs. [753 kg]
Quantity per 40' Container	792pcs

<sup>+</sup>Test Load. Design Load should be multiplied by two thirds.

OPERATING CONDITIONS AND SAFETY RATINGS	
UL 61730	UL 61730
IEC 61215:2021 (Halalstone 35mm)	IEC 61215:2021 (Halalstone 35mm)
Fire Type 2 (UL 61730)	Fire Type 2 (UL 61730)
Salt Mist (IEC 61701)	Salt Mist (IEC 61701)
PID (IEC 62804)	PID (IEC 62804)
Ammonia Resistance (IEC 62716)	Ammonia Resistance (IEC 62716)
Lead-free acc. to RoHS EU 843/2015 (IEC 62321)	Lead-free acc. to RoHS EU 843/2015 (IEC 62321)
Operating Temperature	-40°F to 185°F [-40°C to 85°C]
Limited Warranty	25* Yrs Workmanship and Power Output (Linear)**
Power Output in Year 1	98%
Annual Degradation	0.25%
Power Output in Year 25	92%

NOTE: Values at standard test conditions (STC: air mass AM1.5, irradiance 1000W/m<sup>2</sup>, temperature 25°C).  
<sup>\*</sup> Maximum power at delivery. For guarantee conditions, please check our guarantee document.  
<sup>\*\*</sup> Equipment must be installed by a Panasonic Authorized, Premium, or Elite installer for the twenty-five (25) year Limited Labor Warranty included in the EVERVOLT AllGuard, AllGuard and TripleGuard warranty too apply.  
<sup>‡</sup> Refer to installation manual for detailed mechanical loading information  
<sup>\*\*\*</sup> 1st year 98%, after 2nd year 0.25% annual degradation to year 25.



Reference data for model: EVPV430HK2  
 Cell temperature: 77°F (25°C)



NOTE: Specifications and information above may change without notice.

⚠️ CAUTION! Please read the installation manual carefully before using the products. Used electrical and electronic products must not be mixed with general household waste. For proper treatment, recovery and recycling of old products, please take them to applicable collection points in accordance with your national legislation.